

# Artist Call: 2023-24 Gallery Shows

cspace



[cSPACEProjects.com](https://cSPACEProjects.com)

Hallway  
Galleries



# Hallway Galleries



➤ Art Exhibitions

➤ Receptions

➤ Art Markets

➤ Community Showcases

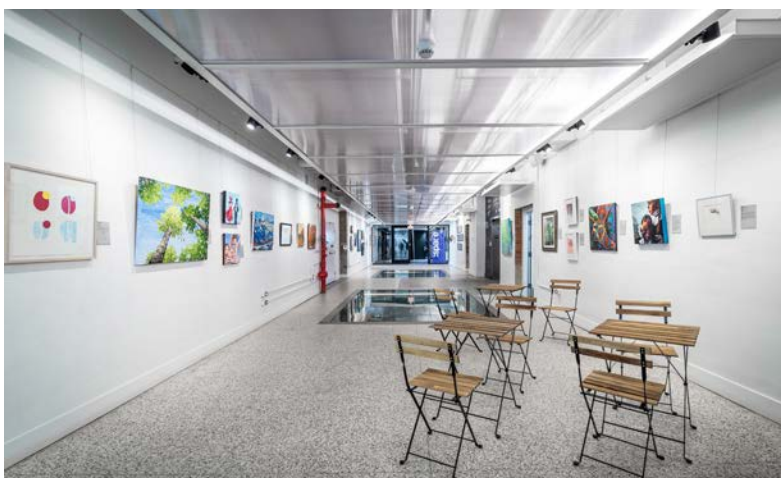
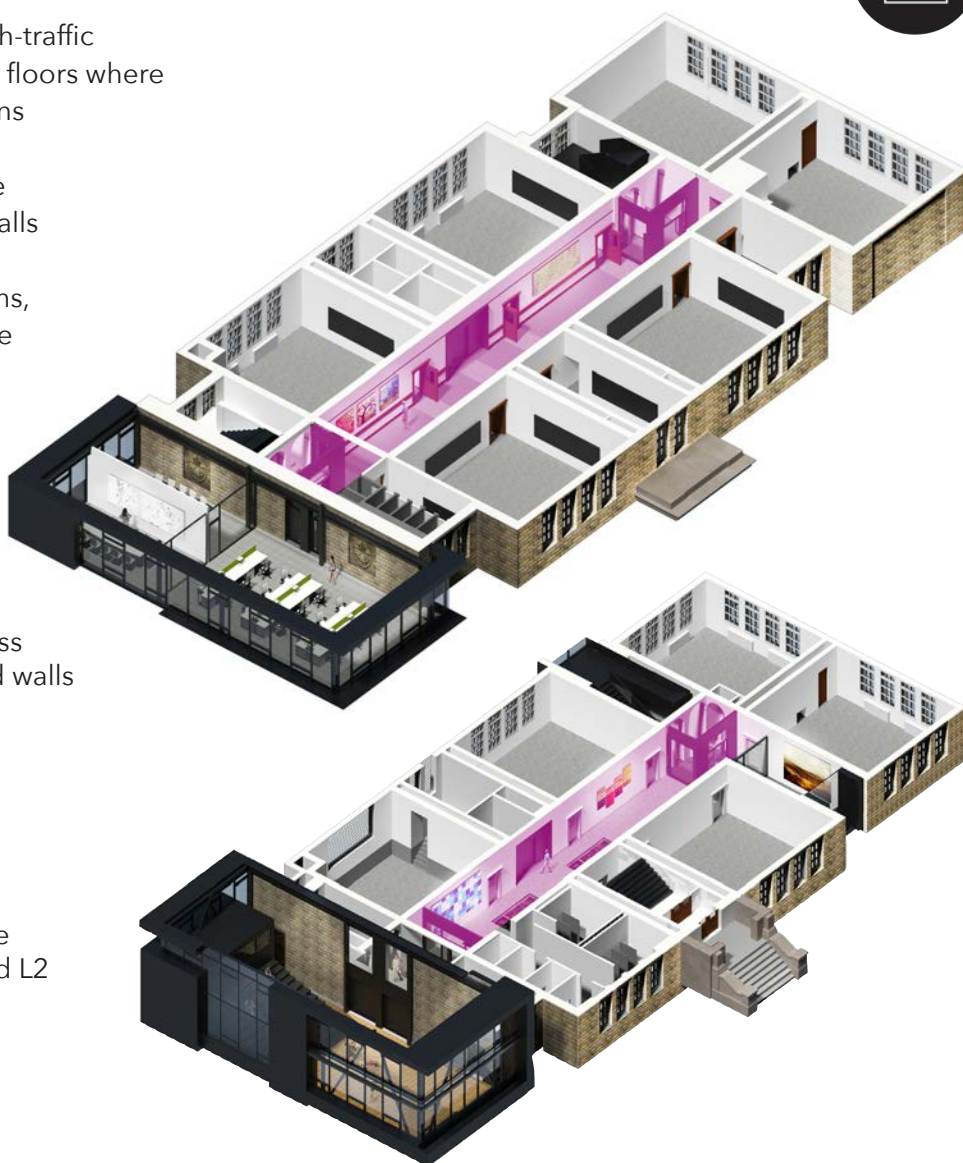




The Hallway Galleries provide high-traffic exhibition opportunities over four floors where artists and presenting organizations can show, sell, and promote their work to both the public and to the diverse creative community that calls the King Edward home on a daily basis. Professional hanging systems, highly adaptable lighting and fibre connectivity allow for unique exhibition opportunities for multi-disciplinary work.

## Features

- > 13' high ceilings with historic character features including glass floor and full height chalk board walls
- > Professional gallery lighting and hanging systems
- > Dimmable LED lighting 'cloud'
- > Integrated audio/video support on Levels 1 and 2
- > Mobile speaker system available and built-in PA system on L1 and L2
- > Reception space
- > Public WiFi
- > Fully accessible



# cSPACE: CALL FOR GALLERY SHOWS

cSPACE is a vibrant arts hub located in the inner city neighbourhood of Marda Loop. Our building is home to 35 arts and culture tenants, a coworking space, coffee shop, Theatre and event spaces, and four levels of hallway galleries. We welcome individual artists, group shows, registered non-profit organizations, and educational institutions to apply to this call.

We particularly welcome exhibitions in line with themed events as follows:

February - Valentine's / Love in all its forms

May - Cinco de Mayo / Latin culture

July - Alice in Wonderland / Fantasy

October - Hallweën / Supernatural

## RENTAL PRICING:

- \$350 per two week show run, \$500 per month long run. If an entry fee or commission on sold work is charged to artists in a group show, the creative industry rate of \$720 per two week show will apply.
- Pricing is per gallery level, multiple levels may be rented.
- Artists looking to book out specific dates or hallway levels will be subject to regular gallery charges as per the cSPACE website.
- Over summer (July-August), shows will be 1-2 months long, for the same pricing.
- cSPACE does not take commission on art sales.

## PRICING INCLUDES:

- Access to our hanging system, and use of the walls of our full hallway space for either two or four weeks.
- Promotion on our event website, newsletters, and social sites
- One reception event during your show. Receptions will be held on the second Thursday of your show, in conjunction with other gallery openings (increasing your traffic flow!)
- Access to general building traffic through our space for theatre events, tenant events, our coffee shop and Farmers Market. We are located in the desirable neighbourhood of Marda Loop.

## WHAT WE REQUIRE FROM YOU:

- Shows are self installed - cSPACE provides an adjustable cable hanging equipment system that works best with two D-rings on the back of each framed piece. Ladders are also provided. cSPACE staff will provide suggestions for hanging, and may adjust work if hung incorrectly.

- Installation Dates: Monday afternoons. Takedown dates: Monday mornings. \*Daytime and evening times available. Installation dates will be scheduled during business hours when our staff are onsite.
- Pieces cannot not be taken down outside of the set install dates, and sold pieces must remain on the wall until the allotted takedown time
- Provide work that is appropriate for the public, in a building that houses Montessori children.
- Gallery capacity: L1/3/4: up to 40 pieces L2: up to 20 pieces
- We may have the capacity for more pieces depending on how many works are showing on other floors.
- Three plinths are also available for 3D works, upon request, but may only be used in L1/3/4 from June-Sept, or on L2 year-round.
- Host a reception for your show (on the scheduled date) and invite your guests. You will be responsible to secure your own private liquor license for the event if you would like to serve drinks to your guests.
- Provide a method for interested parties to contact you directly regarding sales (eg. email/ phone number listed in your gallery tag).
- Complete a post event survey

#### TO APPLY PLEASE PROVIDE (as a single PDF file):

- Your name/names of members in a group show, and proposed show title.
- If you are an entity that charges artists an entry fee or commission on sold work, please provide your terms for participation in the show including pricing and number of artists expected to participate.
- Three (3) high res images of the work to be included in the show, and/or similar representative work
- A 150 word show writeup
- When you would like to ideally show your work? Provide a couple of timing options, and note that we will provide availability based on our other show demands.
- A short paragraph on why you would like to show at cSPACE, and what makes your work unique.

We're excited to hear from you! Please email all submissions to: [events@cspaceprojects.com](mailto:events@cspaceprojects.com).



1721 29th Ave SW  
cSPACEProjects.com

